

State of Wyoming Corner Record

(In compliance with the *CORNER PERPETUATION AND FILING ACT*, Wyoming Statutes, 1997 Section 33-29-140 et. se., and the Rules and Regulations of the Board of Professional Engineers and Professional Land Surveyors)

Reverse side of this form may be used if more space is needed.

Record of original survey and citation of source of historical information (if corner is lost or obliterated). Description of corner monumentation evidence found and/or monument and accessories established to perpetuate the location of this corner. Sketch of relative location of monument, accessories, and reference points with course and distance to adjacent corner(s) (if determined in this survey). Method and rationale for re-establishment of lost or obliterated corner.

RECORD: G.. L. O. survey Alfred M. Rogers in 1873: "80.00 chs, set 18x12x7 Limestone 12 inches deep, marked marked 2 notches on south and 1 notch on east"

FOUND: 13x11x15 broken limestone marked on one side, the other side is in poor condition.

Re-monumentation: Set 2.5 aluminum cap on 5/8x24 inch rebar with cap flush to ground, bury stone alongside, set tpost 1.0 ft. east.

	Point #	North	East	Elev.
NAD83, position:	1861262	367981.98	934502.46	4852.50

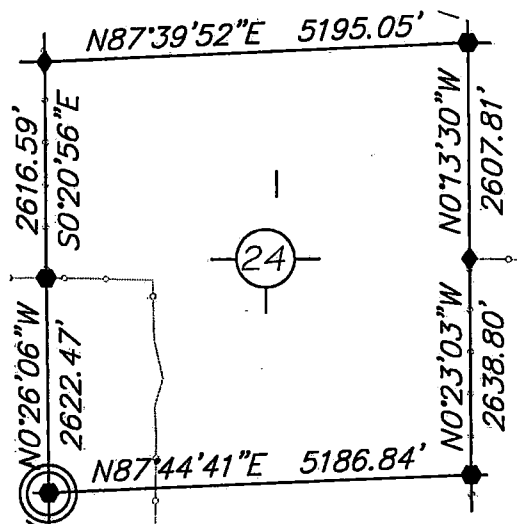
NOTE: After extensive work in this township I found many corner stones moved & wired to fences in low areas. There is minimal section control!

NOTE: BEARINGS AND DISTANCES SHOWN HEREON ARE BASED UPON GRID USING NAD83 WYOMING EAST ZONE AND TRIMBLE R8 GPS OBSERVATION

Monument Location

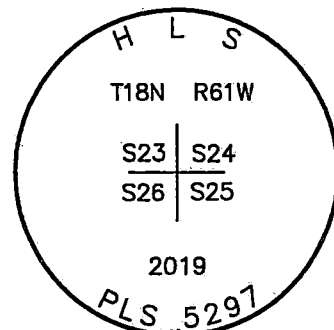
corner referenced this record =

LARAMIE COUNTY



SKETCH

TPOST 1.0' EAST



Monument Inscription

Date of Field Work: April 1, 2019

Office Reference: DRG-21744, Pt.1861262

Cross Index Plat

	1	2	3	4	5	6	7	8	9	10	11	12	13	14	15	16	17	18	19	20	21	22	23	24	25
A																									
B		6		5		4		3		2		1													
C																									
D																									
E																									
F																									
G																									
H																									
J																									
K																									
L																									
M																									
N																									
O																									
P																									
Q																									
R																									
S																									
T																									
U																									
V																									
W																									
X																									
Y																									
Z																									

Firm/Agency, Address

this corner record provided by:

**HAMILTON
LAND
SURVEYING**

UNDER CONTRACT TO:

DRG **RIFFIN & ASSOCIATES, INC.**
1414 ELK ST., SUITE 202
ROCK SPRINGS, WY 82901
(307) 362-5028

This corner record was prepared by me or under my direction and supervision.
SEAL & SIGNATURE



This "corner record" was filed at _____

RECP #: 753767

RECORDED 5/23/2019 AT 10:19 AM BK# 2622 PG# 1581
Debra K. Lee, CLERK OF LARAMIE COUNTY, WY PAGE 1 OF 1

Debra K. Lee
County Clerk _____ Deputy _____

STATE OF WYOMING, Office of Clerk & Recorder, County of Laramie
this block provided for county filing document only

Corner Name: Southwest , Section: 24 , T 18N , R 61W , 6th P.M. , Cross-Index No.: R-21

SBRPEPLS/PLSW: March 1994; PLSW January 1998

County: LARAMIE , Wyoming